



Law Park Revitalization: Final Engineering Design

Thursday, April 20, 2017



MADTOW
ENGINEERS



Project Goals

1. Revitalize Law Park as a community recreational resource and visitor destination
2. Improve universal accessibility to recreational activities on Lake Monona
3. Improve pedestrian and bicycle connections between Downtown and Lake Monona
4. Improve water quality in Lake Monona
5. Strengthen Madison's growing reputation as a green city with this signature park



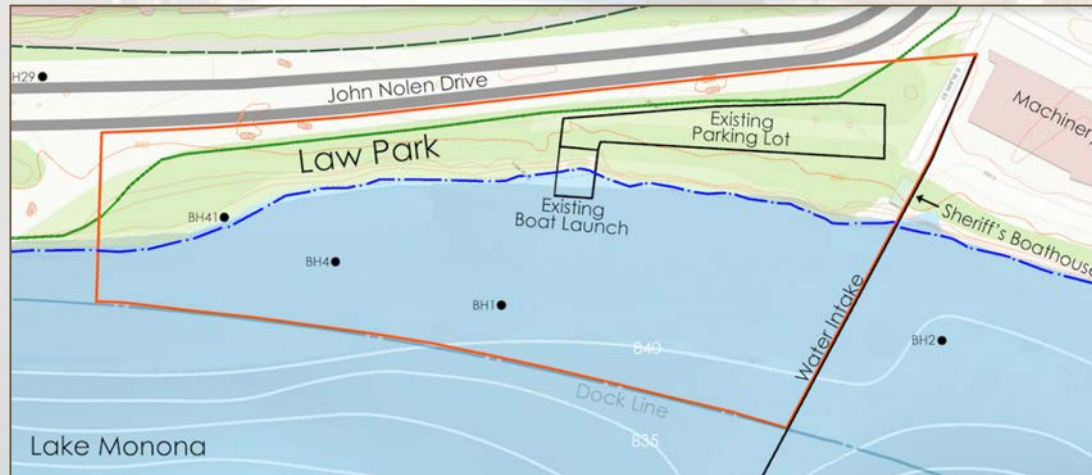
Project Constraints

\$10 million budget

Project boundaries (USH 151 and Lake Monona)

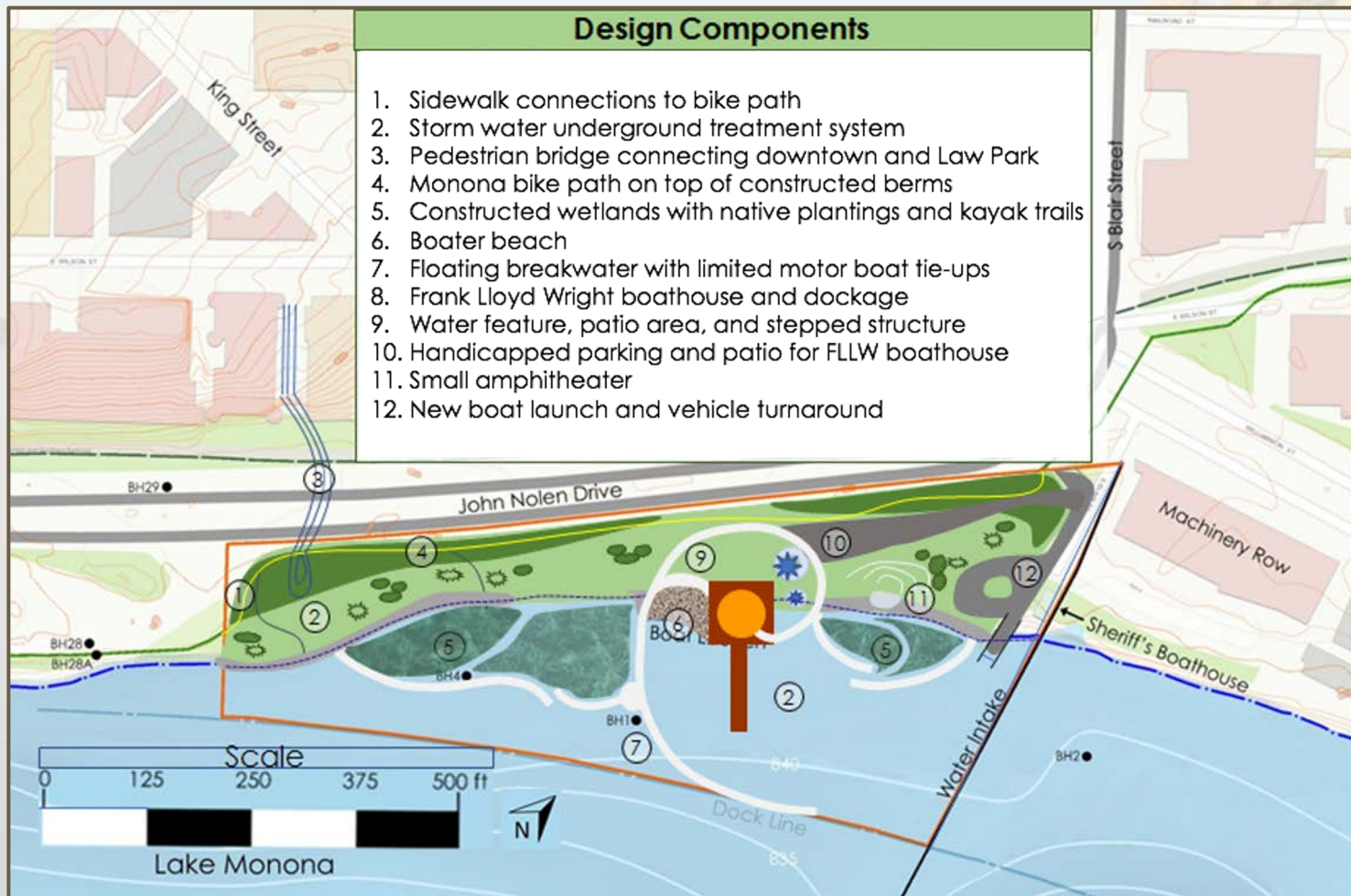
Northwest: John Nolen Drive (US HWY 151)

Southwest:
Monona
Terrace
Convention
Center



Northeast:
Machinery
Row and
Sheriff's
Boathouse

Southeast: Lake Monona and Dock Line

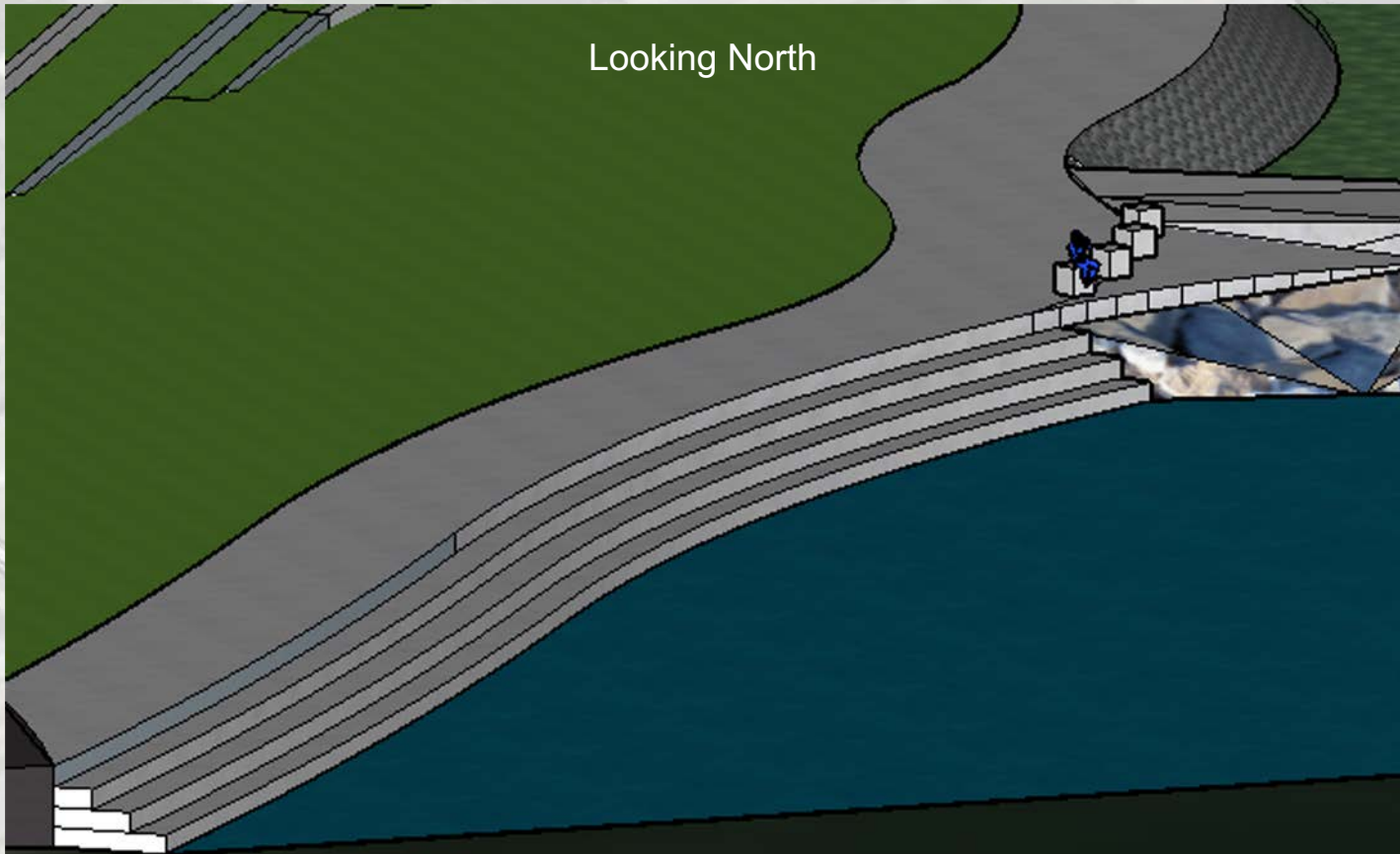


Looking North



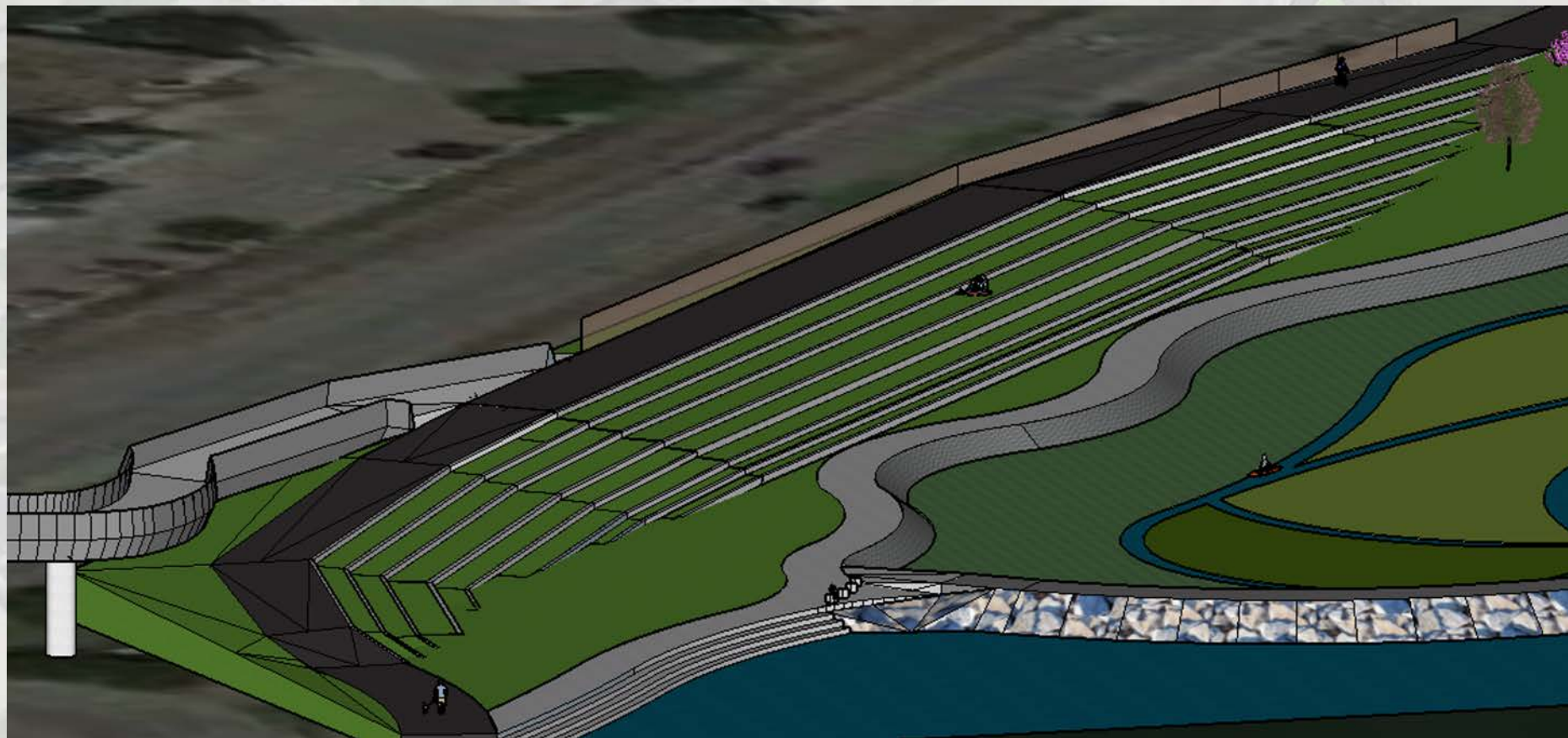
Stepped Stone Seating





Terraced Seating





Pedestrian Bridge



Coastal Analysis - Hydrologic

